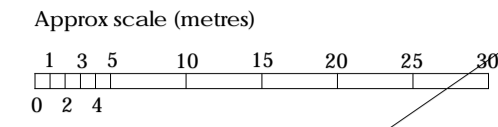
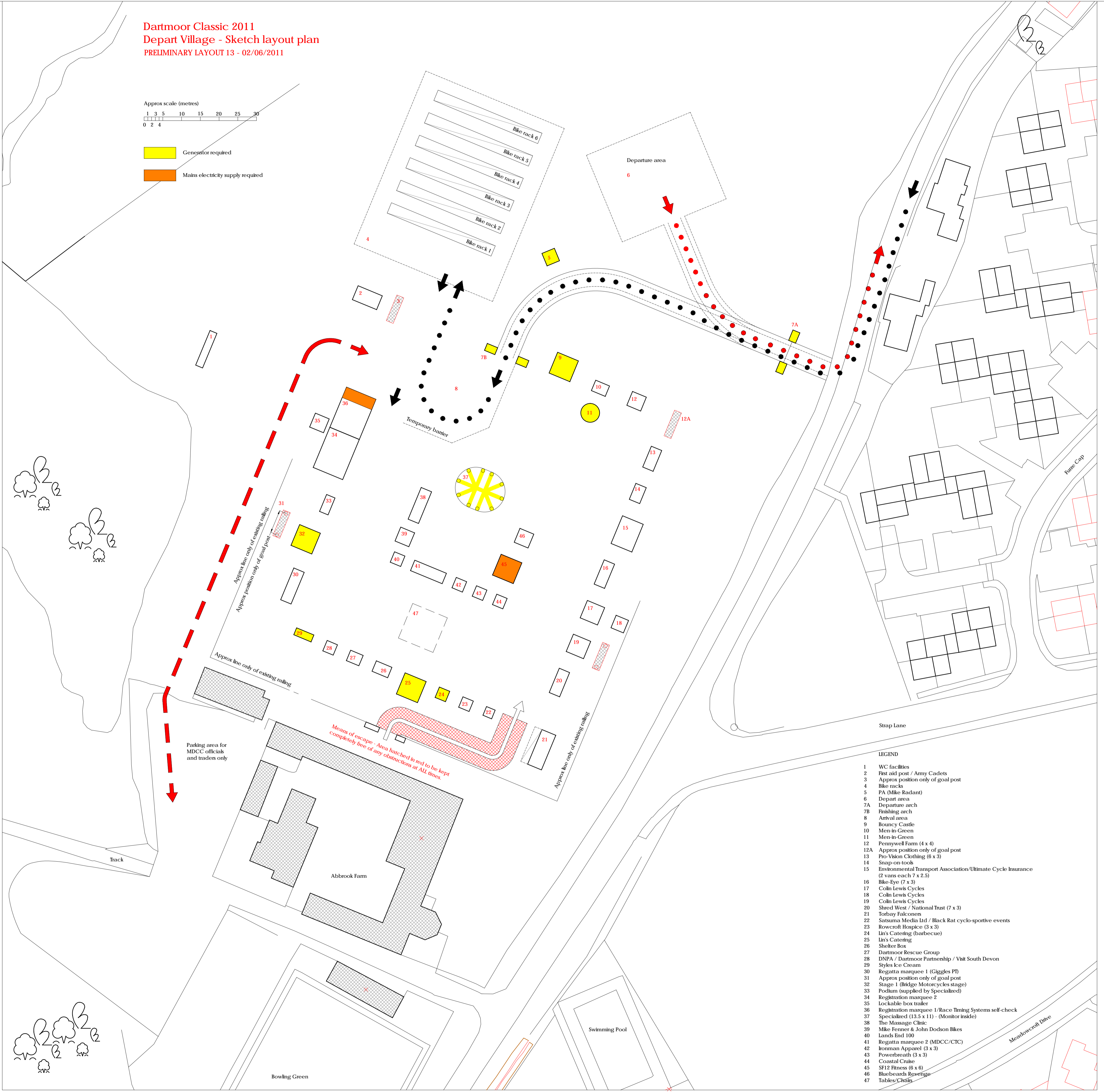


Dartmoor Classic 2011  
 Depart Village - Sketch layout plan  
 PRELIMINARY LAYOUT 13 - 02/06/2011



- Generator required
- Mains electricity supply required



- LEGEND
- 1 WC facilities
  - 2 First aid post / Amy Cadets
  - 3 Approx position only of goal post
  - 4 Bike racks
  - 5 PA (Mike Radant)
  - 6 Depart area
  - 7A Departure arch
  - 7B Finishing arch
  - 8 Arrival area
  - 9 Bouncy Castle
  - 10 Men-in-Green
  - 11 Men-in-Green
  - 12 Pennywell Farm (4 x 4)
  - 12A Approx position only of goal post
  - 13 Pro-Viskan Clothing (6 x 3)
  - 14 Snap-on-took
  - 15 Environmental Transport Association/Ultimate Cycle Insurance (2 vans each 7 x 2.5)
  - 16 Bike-Eye (7 x 3)
  - 17 Colin Lewis Cycles
  - 18 Colin Lewis Cycles
  - 19 Colin Lewis Cycles
  - 20 Shred West / National Trust (7 x 3)
  - 21 Torbay Falconers
  - 22 Satsuma Media Ltd / Black Rat cyclo-sportive events
  - 23 Rowcroft Hospice (3 x 3)
  - 24 Lin's Catering (barbecue)
  - 25 Lin's Catering
  - 26 Shelter Box
  - 27 Dartmoor Rescue Group
  - 28 DNPA / Dartmoor Partnership / Visit South Devon
  - 29 Styles Ice Cream
  - 30 Regatta marquee 1 (Giggles PT)
  - 31 Approx position only of goal post
  - 32 Stage 1 (Bidge-Motorcycles stage)
  - 33 Podium (supplied by Specialized)
  - 34 Registration marquee 2
  - 35 Lockable box trailer
  - 36 Registration marquee 1/Race Timing Systems self-check
  - 37 Specialized (13.5 x 11) - (Monitor inside)
  - 38 The Massage Clinic
  - 39 Mike Fenner & John Dodson Bikes
  - 40 Lands End 100
  - 41 Regatta marquee 2 (MDCC/CTC)
  - 42 Ironman Apparel (3 x 3)
  - 43 Powerbreath (3 x 3)
  - 44 Coastal Chives
  - 45 SF12 Fitness (6 x 6)
  - 46 Bluebeards Revenge
  - 47 Tables/Chairs

746

745